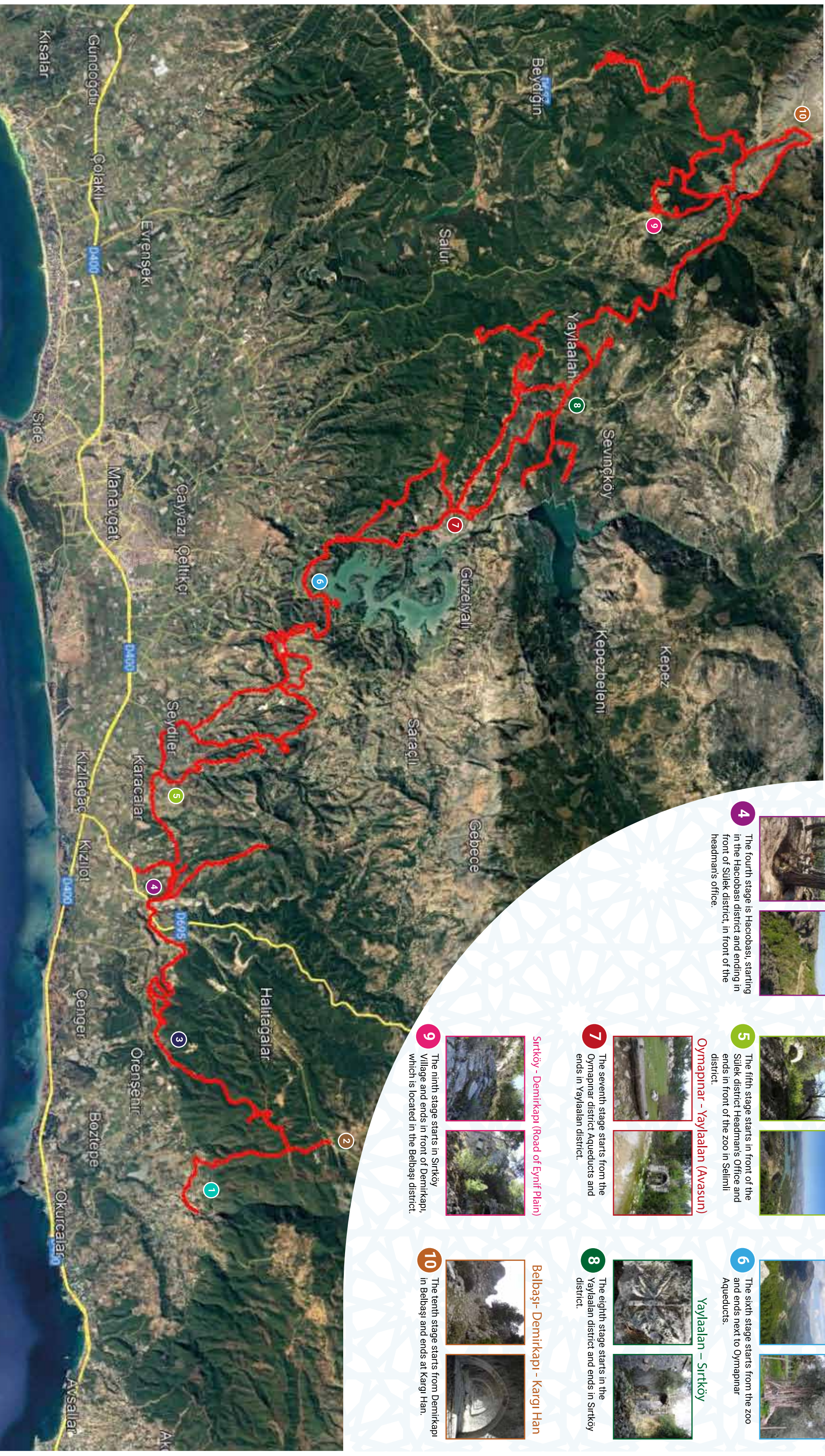


# Sejlik Caravan Road



Seljik Caravan Road Project  
TR61/19/TA6/0020

Ministry of National Infrastructure



Karakaya District - Anıkcı Cemetery



Anıkcı Cemetery - Kadılar District.



Kadılar District - Uzunkele District.



**1** Ali Çetin Stage is in Karakaya district, starting from the village cemetery junction, passing through Mülkü Tombs Location, Kireçlik, Devret, and Başgöyşambaç areas. It ends in the Anıkcı cemetery.

**2** The second stage starts in The Anıkcı Cemetery and end in Kadılar district.

**3** The third stage begins at the Örenşehir - Kadılar asphalt around the road junction and ends within the borders of Uzunkele district.

**Hacıobası District - Sülek District.**

**Sülek District - Selimli District.**

**Oymapınar District.**



**4** The fourth stage is Hacıobası, starting in the Hacıobası district and ending in front of Sülek district, in front of the headman's office.

**5** The fifth stage starts in front of the Sülek district Headman's Office and ends in front of the zoo in Selimli district.

**6** The sixth stage starts from the zoo and ends next to Oymapınar Aqueducts.

**Oymapınar - Yaylaalan (Avasun)**

**Yaylaalan - Sirtköy**

**Sirtköy - Demirkapı (Road of Eynit Plain)**



**7** The seventh stage starts from the Oymapınar district Aqueducts and ends in Yaylaalan district.

**8** The eighth stage starts in the Yaylaalan district and ends in Sirtköy district.

**9** The ninth stage starts in Sirtköy Village and ends in front of Demirkapı, which is located in the Belbaşı district.

**Belbaşı- Demirkapı - Kargı Han**

**10** The tenth stage starts from Demirkapı in Belbaşı and ends at Kargı Han.





## Karakaya district. Arıkçalı Cemetery:

Ali Çetin Stage starts in Karakaya District and ends at Arıkçalı Cemetery, the village cemetery junction, Muku Tombs location, Kireçlik, after passing through Başgaysambaç areas. Ali Çetin Stage, which starts on the stabilized road from the edge of the Manavgat River, proceeds towards the mountain slope through Karakaya District, continues through the ruins of the Caravan Road along with the overview of Manavgat, mostly through the forest and clearings and, reaches to Başgaysambaç area, ending on the stone road in the Arıkçalı Cemetery. There is no water source on the route so there may be water shortage and the water can only be supplied from the villages. For this reason, it is recommended for the hikers to bring in enough water with them. Başgaysambaç and Arıkçalı Cemetery locations on the route can be used for activities such as camping and festivals if water is supplied. The difficulty level of this stage is light and its length is 9,196 km. Ali Çetin Stage is quite suitable for planning a comfortable half-day walk.



## Arıkçalı Cemetery, Kadılar District:

This stage starts at Arıkçalı Cemetery and continues on well-preserved stone roads. It reaches Başgaysambaç area through the forest, and from there, it ends on the stabilized road, at the entrance of Kadılar District under the Stone Quarry as accompanied by very beautiful natural views over the forest path. There may be some water shortage on the route and the water can only be supplied from the villages. For this reason, it is recommended for the hikers to bring in enough water with them. Along the way, there are various forest fruits such as wild strawberries and blueberries. The difficulty level of this stage is light and the length of the stage is 10.66 km. The majority of this stage is within the wildlands. Therefore, it is a convenient route for planning a comfortable half-day walk accompanied by nature views. As an alternative stage on the route, the Mangar Ruins and tombs can be visited approximately 400 m away, but the ruins are indistrict and in ruins.



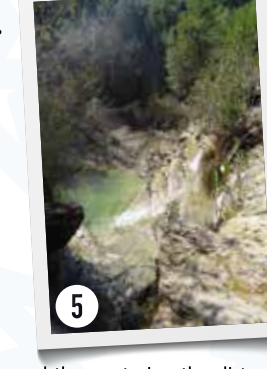
## Kadılar District. Uzunkale District.

The third stage starts at the junction of Örenşehir - Kadılar asphalt road and ends at the limits of Uzunkale District. This stage continues over the asphalt road at the end of Kadılar District over the forest border of Kadılar District, near the historical fountain, extending from the bus stop in Kadılar District, passing through the forest land and greenhouses, down to the Gavrur Beşiği historical cemetery area. From there, the route extends towards the asphalt road junction, proceeding from the riverside as it continues over the bridge finally ending at the limits of Uzunkale District. There may be water shortage on the route. The water can only be supplied from the villages. Therefore, it is recommended for the hikers to bring in enough water with them. Alternatively, you can traverse through the Kadılar District on the stage. The Karaman Oluğu fountain, which is still flowing in the Greenhouses region, can be visited. There are many historical ruins and cities in the alternative stage of Uzunkale District in this stage. Most of the Uzunkale District stage is on the asphalt road. Değirmen Kolağı location and Gökböğüt stream are other alternative stages on the dirt road. They are said to be mills in the past. This valley is worth seeing. The difficulty level of this stage is light and the total length of the stage is 11.52 km.



## Hacıobası District. Sülelele District.

The fourth stage starts in Hacıobası District and ends in front of Sülelele District Headman's Office. The beginning of this stage borders on Uzunkale District, which is the end point of the third stage. As an alternative starting point, the route that converges and continues above Hacıobası District can also be preferred. The route continues through forest roads and reaches the stabilized road in Sülelelele District ending in front of Sülelelele District Headmanship. There are traces of the Caravan Road from place to place. There is no water source on the route, except for the villages at the starting and ending points. For this reason, it is recommended for hikers to bring in enough water with them. The length of this stage, which is the shortest route of the caravan route, is 5.32 km and the difficulty level is light. It is an ideal route for a light walk through half-day villages and forest lands.



## Sülelele District. Selimli District.

The fifth stage starts in front of Sülelele District Headman's Office and ends in front of the Zoo in Selimli District. On the route that starts in Sülelele District right at the exit of the neighborhood, the view of rocky areas that are convenient for rock climbing welcome the hikers. The area continues as the asphalt road is passed over the bridge, made of natural trees from the river bed, through the fields. From this area called Küçükburun that is located a little further from the asphalt road thus entering the dirt road that leads to Kurtlar District. From here, you can reach the historical city of Küçük Güülen Hill through Kurtlar District. From Küçük Güülen, you can pass over the forest and asphalt roads that reach to the waterfall, which can also be utilized as a camping area near Külcüler District. This locale is used by mountain bikers as a transit route to Manavgat. By following the forest roads and pathways from the waterfall, the historical Hammam and fountain ruins near Selimli District are accessed. Right next to the fountain, there are old plane trees that can be considered as ancient monuments. Just above these ruins, here comes Asar Hill. The remains of the Old Church and the ancient city lay on this hill. In addition, the districts of Manavgat, Manavgat and Oymapınar Dams can be seen from this hill with a 360-degree panoramic view. From here, Selimli District can be reached and thus, the route is completed by the zoo in this region. This stage, which is mostly comprised of forest roads, forms a connection with tracks and asphalt roads in some areas. There are two big historical city ruins on this stage in addition to Selimli Tolhan at the end of the stage. The restaurants in Selimli District, just near the dam are open for business. Manavgat Dam offers an impressive view from the Asar Hill. This stage continues with natural and historical beauties. It is one of the longest routes on the Caravan Road. On this route, water can be supplied from a limited amount of places and villages such as waterfalls and small stream beds near Külcüler District. There are two alternative stages connected to this stage. One of them reaches from Sülelelele District to Hacıobası District and from there it extends to Kurtlar location and Güülen Hill. The other stage is connected to the village fields from the borders of the Kabapelit District and reaches to the Sunturlu District from the Hacıobası District and to the Waterfall from the Külcüler District. Some issues with the GSM networks can be had. Since it is a long walking route, it is important for the hikers to carry their own drinking water, food and first aid supplies. The length of this stage is 22.66 km and the difficulty level is light.



## Oymapınar District. Yaylaalan (Avasun)

The seventh stage starts from the Aqueducts of Oymapınar District and ends in Yaylaalan District. This entire stage continues on the forest roads. There are traces of the caravan road from place to place. At the end of the stage, the Natural Stone Bridge in the Yaylaalan District welcomes the visitors. Hikers may experience problems regarding the GSM networks in some places. There are occasional water sources on the route; however, due to the distance between the water sources, it is important for the hikers to carry their own necessities. The Kartallık and Fatmalar (Hattmalar) mountains can be reached from the high areas of the region through the alternative routes in this stage. Oymapınar Dam offers an impressive visual festivity over Fatmalar Mountain. In another alternative stage, the route extends to Manavgat Dam through Kızılca Gölçük area, but the road ends next to the dam. Therefore, the same path must be followed to return. With the increase in altitude in this region, quite beautiful natural landscapes emerge. The difficulty level of this stage is light, but gradually increases in altitude as you begin to enter the interior sections of the area. The difficulty level of this stage is light and its length is 8.6 km.



## Yaylaalan District. Sirtköy District.

The eighth phase starts in Yaylaalan District and ends in Sirtköy District. From Yaylaalan District, you can reach Tolhan, Değirmendere promenade, and then to Sirtköy District, via Gümrük Han, Hisarcık, Erdaş regions. At this stage, traces from different periods of history can be found. Hisarcık, Gümrük Han and Tolhan are places worth seeing. Especially on Hisarcık and Erdaş Mevkii, there are distinguishable ruins of stone roads ruins as well as the remains of an ancient city. The traces of the Yörük Culture can also be seen on the stage. The stage continues through forest roads and offers a magnificent historical and natural beauties. At this stage, Üç İrmak (Uçurmak) Stream flows next to the Tolhan and Değirmen Deresi recreation area. There are also many fountains built by the villagers in this area. The alternative stage of this route leads from Yaylaalan Neighborhood to ancient ruins and stone roads. Some problems may be had with the GSM networks in some places. There are some water sources on the route, but due to the distance between the water sources, the hikers should carry their own supplies. The difficulty level of this stage, which is the longest route of the caravan route, is light and its length is 23.30 km.



## Oymapınar District.

The sixth stage starts from the Zoo and ends next to the Aqueducts of Oymapınar District. In this stage, which starts by the Zoo, the forest lands are accessible before coming to Oymapınar District via asphalt roads. From here, the route reaches Sürmeşe area with the Observation Terrace in the middle of the stage via forest roads and tracks. Sürmeşe offers a bird's-eye view of most of Manavgat District. There are natural beauties and historical ruins along the route. From Sürmeşe, the asphalt road between the fields are accessible and at the end of the route, hikers, through the asphalt road, may reach the historical Roman Aqueducts, which are one of the rare examples of the instances in Turkey. As an alternative to this route, the Aqueducts that go back to Roman Era can be accessed from the asphalt road through the Oymapınar District.

Another alternative stage is undertaken by traversing Tilkiler District at the crossroads before coming to the Aqueducts. The historical areas of Kirse and Sivri Hill summit can be reached from the Tilkiler District. There are sinkholes, caves, historical cemeteries, historical cisterns and wells, as well as ancient cities on this alternative stage, which is mostly traversed on asphalt roads. With its historical texture and mystical atmosphere, Tilkiler District also offers opportunities worth seeing. In the middle of this alternative stage, another alternative route is directly connected to the Yaylaalan District via the Historical Cemetery, bypassing the Tilkiler District. This stage continues through the forest and field roads, where the reams of stone roads are also encountered. There may be water shortage on the route and the water can only be supplied from villages and highlanders. The difficulty level of this stage is light and its length is 12.77 km.



## Belbaşı Demirkapı Kargı Han

The tenth stage starts from Demirkapı in Belbaşı and ends at Kargı Han. The route reaches from Demirkapı to Atizi location, from there to Murtbeli location and then to Kargı Han. At the beginning of the stage, Demirkapı and the Caravan Road ruins in Atizi area offer an impressive atmosphere. Demirkapı is the highest point of the Caravan Road. The longest built Stone Road on the Caravan Road is situated in this stage. The majority of the stage consists of paths and forest roads, and the ending section of the track leads to an asphalt road by Kargı Han. Kargı Han stands out as the best preserved caravanserai in the region. At the end of the stages, the historical structures called Italian bridges are also remarkable. As an alternative stage of the route, a track extends from Sivri Cini Locality to the Historical Bridge in the valley bed, to the river bank, and from there to Akçaalan area, before coming to Atizi area. However, on the way, dense vegetation merges with a cliff and there is a risk of getting lost. The difficulty level of this alternative stage is high. For this reason, it is not recommended to enter this route without a guide with knowledge of the area. Another alternative stage, connects to Sirtköy between Murtbeli and Atizi. The entire stage consists of a forest road. Some problems may be had with the GSM networks in some places. There are water sources at intervals along the route; however, it is important for the hikers to carry necessities such as water with them. The length of this stage is 17.63 km and the difficulty level is light.



## Sirtköy District. Demirkapı (Eynif Plain Road)

The ninth stage starts in the Sirtköy district and ends in front of Demirkapı, which is located in the Belbaşı district. On the route, there are Sirtköy, Eterna Ancient City, Akçaalan Locality, Değirmen Dere recreation areas. Demirkapı is also located in Belbaşı area. In this stage, the distinctive ruins of the ancient city of Eterna lays on a long knitted walking path. The route, most of which consists of paths, provides a connection with a short forest road. The highest areas on the caravan route are situated here. At this stage, the deep valleys combined with the elevation offer eye-catching views. At the same time, there are areas for camping with tents by the creek and picnic areas for daily picnics. There are water sources and fountains on the route. Some problems may be had with the GSM networks in some places. The length of this stage is 12.56 km and the difficulty level is light.



# *Seljuk Caravan Road*

Seljuk Caravan Road Project  
TR61/19/TAG/0020



This brochure It was prepared within the scope of the Seljuk Caravan Road supported by the Western Mediterranean Development Agency.

The sole responsibility for the content belongs to the Manavgat Chamber of Commerce and Industry and the Western Mediterranean Development Agency and, this document does not reflect the views of the Ministry of Industry and Technology.

**Aydınevler Mah. 5578 Sok. No:6 (P.K. 302) Manavgat / Antalya**  
**[www.matso.org.tr](http://www.matso.org.tr)**

**Seljuk Caravan Road Project**  
**TR61/19/TAG/0020**